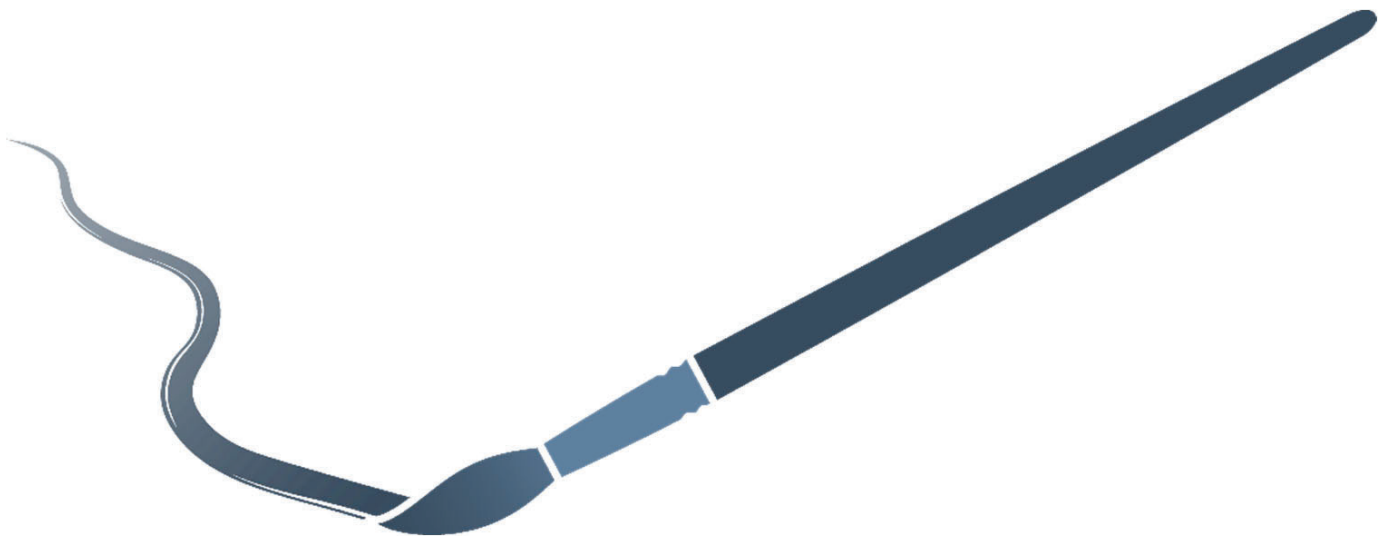


# *Children's Art & Craft*

---

Samford Show – July 10 & 11, 2021



We would like to thank the following sponsors:

Art Shed – Brisbane

Foot Health Clinic – Samford

The Leisa Tree Fair Trade Shop

Officeworks - Strathpine

Rotary Club of Samford Valley

Samford Variety Store

# General rules for the conduct of Samford Show Pavilion exhibitors

Adapted from "Guidelines of QLD Chamber of Agricultural Societies Inc"

- 1 Entry forms are available at [www.samfordshowsociety.com.au](http://www.samfordshowsociety.com.au), Samford Design & Copy Centre, Slab Hut – John Scott Park Samford, Samford Variety Store or from the showground pavilion on the day of entry.
- 2 All exhibitors must present their exhibits for judging by the appointed time and place. The Chief Steward of the section shall have the right to change exhibits to the correct class or disqualify if the entry does not meet the criteria.
- 3 The Judges' decision in any section will be final. The Samford Show Society reserves the right to declare no competition in any class if there are insufficient entries.
- 4 Ribbons/trophies and/or prizes will be awarded at the Judges' discretion.
- 5 Whilst all reasonable care is taken, the Samford Show Society cannot accept responsibility for any losses or damage to exhibits or any other property whilst it is on the Samford Show Society's Showground.
- 6 In the event of a dispute arising from the Rules or any other aspect of any competition, the decision of the President, or President's nominee, of the Show Society shall be final, and the process of reaching a decision shall be in the absolute discretion of the President or President's nominee.

**NO LATE ENTRIES WILL BE ACCEPTED.**

## Disability Criteria

A person with disability may enter any category. They must indicate that they wish to be entered as an artist who is differently skilled, by adding a 'D' to the class number on the entry form.

Following is a guide for entry for those with varying circumstances:

- Physical – affects a person's mobility or dexterity
- Intellectual – affects a person's abilities to learn
- Mental illness – affects a person's thinking processes
- Sensory – affects a person's ability to hear or see
- Neurological – affects a person's brain and central nervous system
- Learning disability
- Physical disfigurement
- Immunological – the presence of organisms causing disease in the body

To be deemed a disability, the impairment or condition must impact daily activities, communication and/or mobility, and has lasted or is likely to last 6 months or more.

COLLECTION OF EXHIBITS: Walk-in collection after 4.30pm and drive-in collection after 5.00pm on Sunday 11<sup>th</sup> July 2021 & MUST be signed out by the stewards. Any exhibits not collected by **5.30pm on Sunday** will remain the property of the Samford Show Society.

## Conditions of Entry

- 1 ALL EXHIBITS DELIVERED to the showgrounds pavilion: Thursday 8<sup>th</sup> July 2021 between 2.00pm – 6.00pm together with an entry form.
- 2 ENTRY FEE per child: \$2 per entry, MAXIMUM entry of TWO pieces per class.
- 3 All entries must be the child's unaided work & completed in the last 12 months.
- 4 Individual schoolwork accepted, but not work where 'everyone in the class made one.'
- 5 Work done under instruction in art/craft class are not acceptable.
- 6 ALL artwork, framed craft and drawings MUST be mounted with a hanging device (stiff cardboard is acceptable). Hooks/Loops/D's x 2 or similar screwed in either side with suitable string/cord/wire, or entry will not be accepted. Loose pages, sketchbooks etc. are not acceptable for entry. Hooks/Loops/D's & string/cord/wire for sale from Mooeys.
- 7 Dimensions:
  - a Artwork and Framed craft: no greater than 1 m x 1 m (including frame).
  - b 3D articles: no greater than 300 mm in any direction.
- 8 Labels:
  - a Back of all entries: CHILD'S NAME, DATE OF BIRTH & PHONE NUMBER.
  - b Front of all entries: ENTRY CLASS (EG. CLASS 24) THEN CHILD'S AGE (AS AT 1<sup>ST</sup> JULY 2021).
- 9 Judging – Entries are judged on; age development; appropriateness for age group class; composition; originality; presentation and technique.

**ALL CURRENT QUEENSLAND COVID-19 RESTRICTIONS AND GUIDELINES MUST BE ADHERED TO AT ALL TIMES. Please refer to the website closer to the date.**

# Entry Categories

## 6 years and under as at 1<sup>st</sup> July 2021

- Class 23 Drawing (pencil, charcoal, felt pen, pen and ink, crayon)
- Class 24 Painting (watercolour, acrylic, oils, pastels)
- Class 25 Craft (sewing, weaving, wool creations, loom bands etc.)
- Class 26 3D item (any medium including collage)

## 7 & 8 years as at 1<sup>st</sup> July 2021

- Class 27 Drawing (pencil, charcoal, felt pen, pen and ink, crayon)
- Class 28 Painting (watercolour, acrylic, oils, pastels)
- Class 29 Craft (sewing, weaving, wool creations, loom bands etc.)
- Class 30 3D item (any medium including collage)

## 9 - 11 years as at 1<sup>st</sup> July 2021

- Class 31 Drawing (pencil, charcoal, felt pen, pen and ink, crayon)
- Class 32 Painting (watercolour, acrylic, oils, pastels)
- Class 33 Craft (sewing, weaving, wool creations, loom bands etc.)
- Class 34 3D item (any medium including collage)

## 12 - 14 years as at 1<sup>st</sup> July 2021

- Class 35 Drawing (pencil, charcoal, felt pen, pen and ink, crayon)
- Class 36 Painting (watercolour, acrylic, oils, pastels)
- Class 37 Craft (sewing, weaving, wool creations, loom bands etc.)
- Class 38 3D item (any medium including collage)

## 15 - 17 years as at 1<sup>st</sup> July 2021

- Class 39 Drawing (pencil, charcoal, felt pen, pen and ink, crayon)
- Class 40 Painting (watercolour, acrylic, oils, pastels)
- Class 41 Craft (sewing, weaving, wool creations, loom bands etc.)
- Class 42 3D item (any medium including collage)

## OPEN AGE (any of the above ages)

- Class 43 2D item (same as drawing and painting from above classes)
- Class 44 3D item (same as craft and 3D item from above classes)
- Class 45 Digital (original concept, digital manipulation of own original)
- Class 46 Any medium – Theme “Patterns in Nature”

Entries not complying with “Conditions of Entry – 6” will not be accepted.